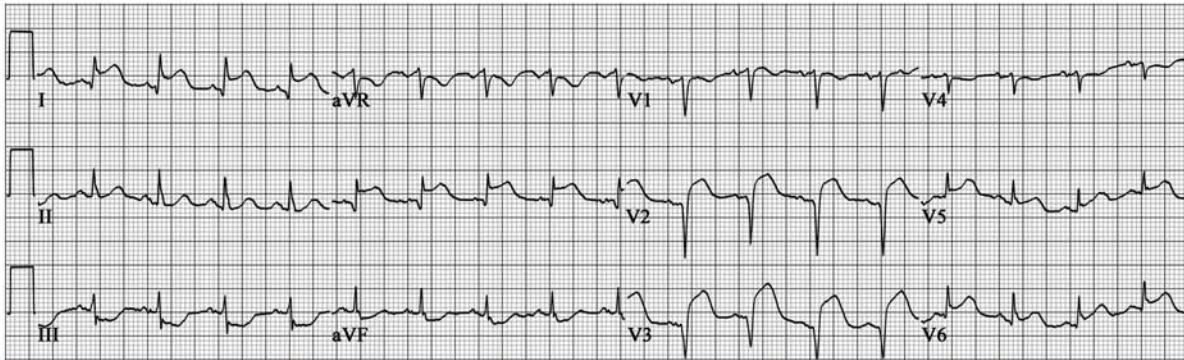


ESSENTIAL ELECTROCARDIOGRAPHY II - ECG PATTERNS

AN ONLINE CASE-BASED COMPUTER PROGRAM ON INTERPRETING THE MOST IMPORTANT ECG PATTERNS

TEACHES AN ORDERLY APPROACH TO INTERPRETATION

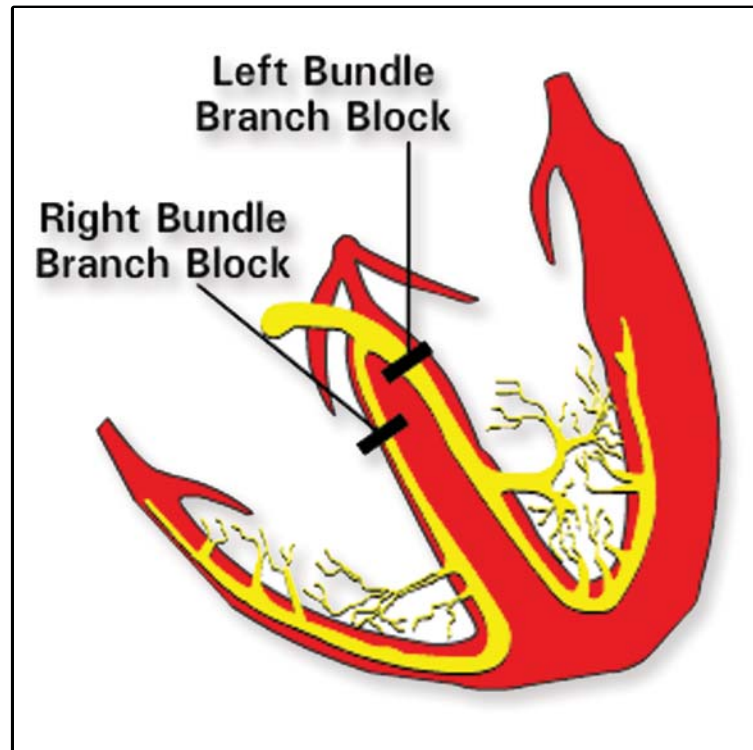


ECG Data							
Std	Normal	PR	Normal	F Axis	Normal	ST	Elevated/Depressed
HR	107	QRS	Normal	P	Normal	T	Flat
Rhy	Sinus tach	QTc	Normal	QRS Morph	Pathologic Q's	U	Absent

EVOLVING ANTEROLATERAL MYOCARDIAL INFARCTION

QUALITY AND BENEFITS

- ▶ Accessible on PC or Mac
- ▶ Learning, Practice and Testing Sections
- ▶ Developed by Multicenter Consortium
- ▶ Interactive with Feedback
- ▶ Trains Students, Residents, Physicians, Physician Assistants, Nurses and Nurse Practitioners
- ▶ Saves Faculty Time Needed to Carry Out Multiple Teaching Sessions



CONTRIBUTORS – Cardiologists and Educators from:

Miami • Arizona • Duke • Dundee • Florida • Illinois • Iowa • Mayo

Gordon Center for Research in Medical Education

Saving Lives Through Simulation Technology®

For a demonstration of **Essential Electrocardiography II**,
visit our website: www.gcrme.miami.edu

Contact us for information on how you can acquire **Essential Electrocardiography**
Phone: 305-243-6491 ♦ Fax: 305-243-6136 ♦ Email: umedic@gcrme.med.miami.edu

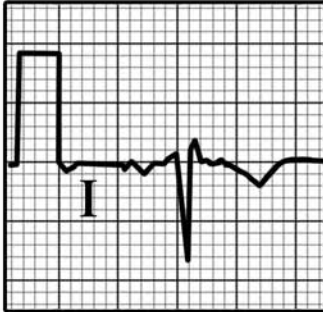
UNIVERSITY OF MIAMI
MILLER SCHOOL
of MEDICINE



CURRICULUM

- ▶ Normal
- ▶ Early Repolarization
- ▶ Limb Lead Reversal
- ▶ Acute and Evolving Pericarditis
- ▶ Right and Left Bundle Branch Block
- ▶ Left and Right Ventricular Hypertrophy
- ▶ Myocardial Ischemia
- ▶ Myocardial Infarction
- ▶ Hyperkalemia and Hypokalemia
- ▶ Wolff-Parkinson-White Pattern

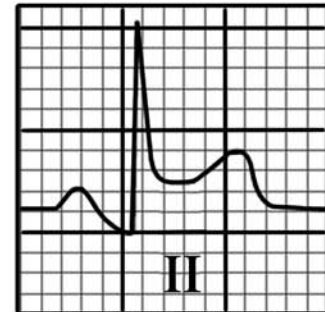
LIMB LEAD REVERSAL



EARLY REPOLARIZATION



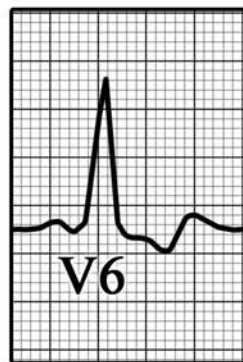
PERICARDITIS



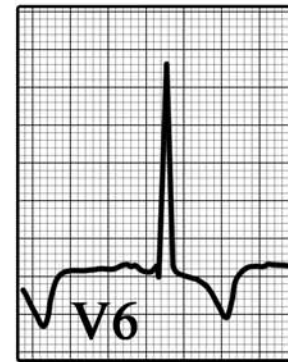
RBBB



LBBB



LV HYPERTROPHY



ISCHEMIA



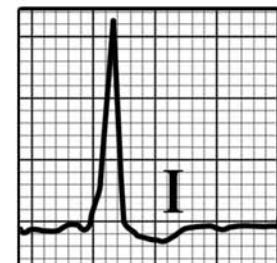
INFARCTION



HYPERKALEMIA



WPW



Gordon Center for Research in Medical Education
Saving Lives Through Simulation Technology®

For a demonstration of **Essential Electrocardiography II**,
 visit our website: www.gcrme.miami.edu

Contact us for information on how you can acquire **Essential Electrocardiography**
 Phone: 305-243-6491 ♦ Fax: 305-243-6136 ♦ Email: umedic@gcrme.med.miami.edu