

Acute Stroke

DIAGNOSIS AND MANAGEMENT FROM PREHOSPITAL TO DISCHARGE

A **UMedic**[®] INTERACTIVE, MULTIMEDIA COMPUTER PROGRAM



Follow a virtual patient's history, neurologic examination, imaging studies, and treatment

QUALITY AND BENEFITS

- ▶ Developed by multicenter consortium
- ▶ Tested at multiple medical centers
- ▶ Provides standardized learning experience
- ▶ Enhances bedside skills and knowledge of:
 - ▶ Cerebrovascular anatomy
 - ▶ Pathophysiology
 - ▶ Diagnostic procedures
 - ▶ Stroke treatment

ADAPTABLE FORMAT

- ▶ Trains students, residents, physicians, physician assistants, nurses, and nurse practitioners
- ▶ For trainees:
 - ▶ Self-learning or classroom
 - ▶ Supplements ward teaching
 - ▶ Saves faculty time
- ▶ For practitioners:
 - ▶ Prepares for Stroke Center
 - ▶ Reviews NIH Stroke Scale

CONTRIBUTORS - Neurologists and Educators from:

Miami ♦ Duke ♦ Dundee ♦ Emory ♦ Northwestern ♦ Rush ♦ Wake Forest

LEARNING CONTENT

- ▶ Clinical presentations
- ▶ Cerebrovascular anatomy
- ▶ Pathophysiology
- ▶ Differential diagnosis
- ▶ Ischemic penumbra
 - ▶ Blood pressure management
 - ▶ Thrombolytic therapy
 - ▶ Neurologic worsening
- ▶ Acute imaging
- ▶ Supportive medical care
- ▶ Etiologies & diagnostic evaluation
- ▶ Secondary prevention

SPECIAL FEATURES

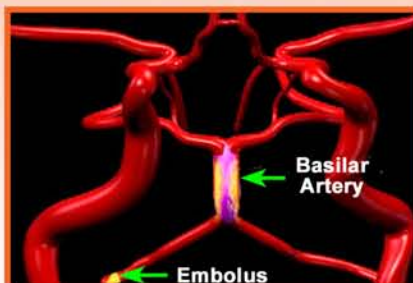
- ▶ Interactive with feedback
- ▶ Case-based with virtual patient
- ▶ Multimedia content
 - ▶ Videos
 - ▶ Graphics
 - ▶ Animations
 - ▶ Diagnostic images
- ▶ Network capable
- ▶ Supplemental NIH Stroke Scale tutorial
- ▶ Pre- and posttesting programs

PROGRAM MENU

QUIT	
Introduction	Complication Prevention
History	Etiologic Evaluation
Prehospital Management	Arterial
E.D. Management	Cardiac
First Minutes	Further
Examination	Secondary Prevention
Supplemental NIHSS Tutorial	Antithrombotic Therapy
Clinical Syndrome	Risk Factor Modification
CT Scan	Commentary
Emergent Therapy	Final Screens

SAMPLE CONTENT FROM UMedic® ACUTE STROKE

Graphics & animations



MR angiography



Carotid ultrasound with corresponding anatomy

